

# K O B E

Kobe City PR Digest English February 2025



If you have any questions about ward office procedures, financial support for raising children, etc.



**Call the Kobe International Community Center (KICC)!**

☎ 078-742-872 | (11 languages)

↑ Scan here to visit the website!

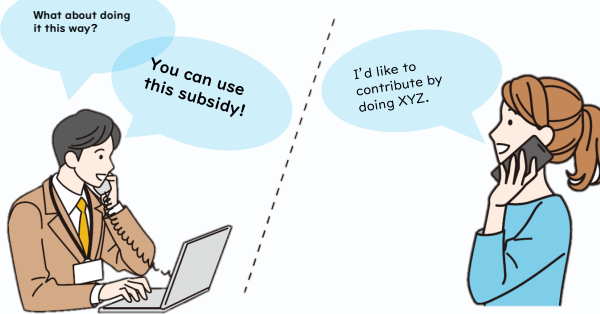


Edited by: Kobe City Community Engagement Division;

Translated by: Kobe City International Division

## Creating Smiles by Trying Something New

More and more people are thinking about how they can contribute to their local communities by utilizing their skills, passions and interests. Kobe City can support you in helping to make your ideas a reality— please check our resources for more!



### Consultation Desk for Local Contribution

You can consult with staff about any ideas you have to contribute to your local community, whether you are seeking advice as an individual, company, or organization!

#### How to Consult:

• TEL: 078-322-5182

(Mon.~Fri. 8:45AM~5:30PM)

• Homepage (24 hr. support)



Further Details (JPN) ↑

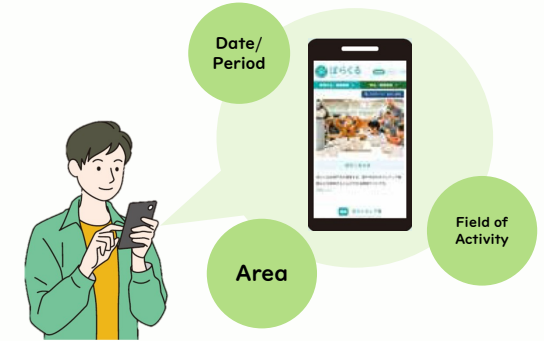
### Consultation Desk Support Example:

“I would like to make the local kids happy with presents that utilize my company’s technology...”



←Each child received a notebook with their own painting as the cover!

## Creating Smiles by Trying Something New



### Volunteer Recruiting and Information Website: Borakuru

Borakuru is a website that connects people who want to volunteer for local community activities with organizations that are seeking volunteers. You can search from over 100 activities by interest, date, area, and other criteria!



Further Details (JPN) →

### Example of Activities:

“Is there anything I can do that lets me utilize what I’m passionate about?”



Said volunteer was able to get involved in supporting junior high school students with their studies!

### **Now seeking volunteers through the Borakuru website!**

- Operational support in disaster safety events
- Exchange events with children with impairments
- Forest maintenance work at Futatabi Park

...and more!

## Create a Unique Design with a Fun Stamp Adventure!



charming illustration.

Explore participating museums and cultural facilities that are part of the KOBE Museum Link and join their stamp collecting event! By collecting a stamp from one museum in each group and layering the stamps from all five groups, you can create a

**Date:** Until Monday, March 31  
 ※Except on each museum's closed days

**How to Participate:** Pick up a stamp sheet at any participating museum. Visit one museum from each of the five groups to collect stamps and complete your stamp illustration.

**Inquiries:** 078-393-8500



Further Details (JPN) →



## Valentine's Light-Up in Meriken Park



From Valentine's Day to White Day, Meriken Park will be transformed into a romantic wonderland with a special light-up event.

Capture unforgettable memories at photo spots such as our heart-frame chair! Port Tower and the BE KOBE monument will also be lit up in special pink and white colors!



**Period:** Until Sunday, March 16, 5:00PM~9:00PM

**Fee:** Free

Further Details (JPN) →



## Enjoy Music While Strolling through Meriken Park!

### Meriken Music Nights

Every Thursday and Friday evening, a corner of Meriken Park is transformed into a live music venue. There will be food trucks serving sweets, snacks, and drinks!



**Date & Time:**  
 Thursday, February 20~Friday, February 21  
 Thursday, February 27~Friday, February 28  
 6:00PM~7:00PM (tentative)

**Fee:** Free

Further Details (JPN) →



## Must-Try Events!

### Monet & Friends Alive Exhibition (Chuo Ward)

Step into the world of Claude Monet and French impressionists using music and cutting-edge technology to create an immersive exhibition!



Photo: Grande Experiences

**Date & Time:** Until Sunday, March 30  
 Open Tues.~Fri. 11:00AM~6:00PM,  
 Weekends and holidays 10:00AM~6:00PM

**Venue:** KIITO Hall

**Fee:** Admission required

**Inquiries:** 0570-200-888

※ 12:00PM~5:00PM, except weekends and holidays

Further Details (Multilanguage) →



### Dr. Tomitaro Makino Plant Exhibition (Kita Ward)

Kobe Arboretum is holding a botanical art exhibition featuring plants named or discovered by renowned botanist Dr. Tomitaro Makino!

**Date & Time:** Until Sunday, April 6, 9:00AM~5:00PM

**Venue:** Kobe Municipal Arboretum

**Fee:** Park admission fee required

**Inquiries:** 078-591-0253



Further Details (Multilanguage) ↑

### Karumo Meat Festival (Nagata Ward)

Enjoy a variety of meats including wagyu beef, ham, and sausages! There will also be food stalls, performances, and tastings of grilled meats and pork soup.



**Date & Time:** Saturday, February 22, 10:00AM~2:00PM

**Venue:** Central Wholesale Market, Western Market branch

**Fee:** Free entry



Further Details (JPN) ↑

## Wander and Discover: Stamp Scavenger Hunt in Shin-Nagata

A digital stamp rally is currently taking place in the southern Shin-Nagata area. Use your smartphone to scan the QR codes displayed at each spot, collect digital stamps, and win exciting prizes!

**Date:** Until Friday, February 28

**Location:** Around the south area of JR Shin-Nagata Station

**Fee:** Free (some segments of the event may incur a fee)

### Win local Shin-Nagata goods!

Collect a certain number of stamps to win locally-produced prizes!

**3 stamps:** Refreshing apple juice

**6 stamps:** Ready-to-eat Nagata bokkake

**9 stamps:** Bara Sauce (condiment)



**Prize Exchange Deadline:** Sunday, March 16, 5PM

**Exchange Location:** Futaba International Plaza

**Open Hours:** Tuesday to Sundays, and public holidays, 10:00AM~5:00PM

※Collected stamps will not be reset while the event is ongoing.

Further Details (JPN) →

